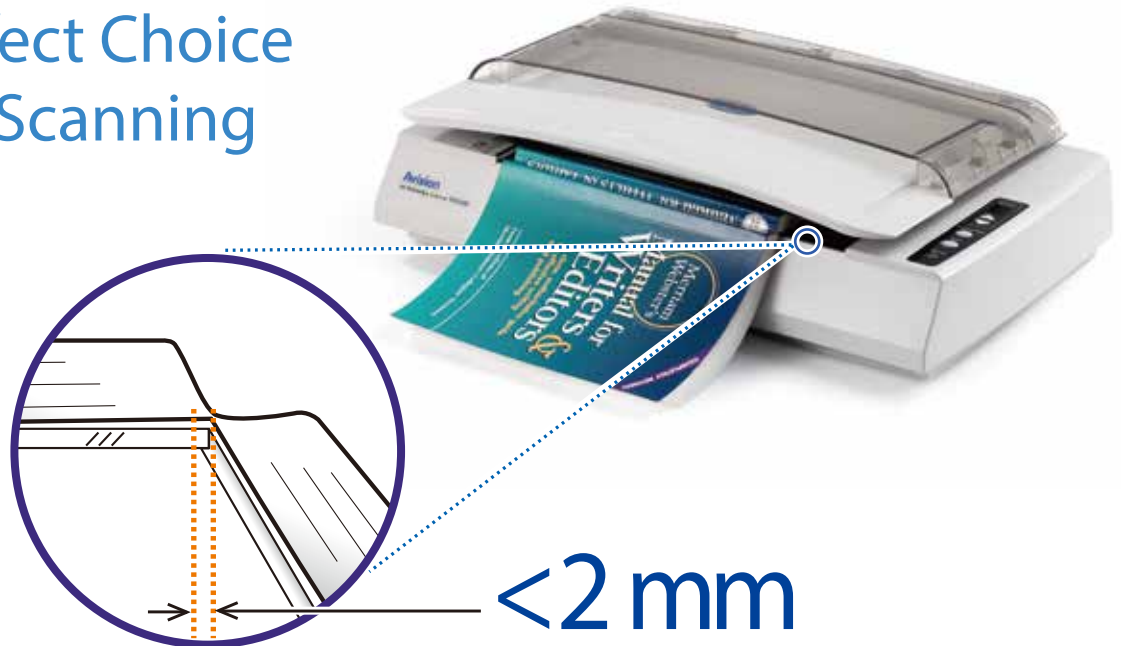


Your Perfect Choice for Book Scanning



Features:

- The slightly slanted front platform makes book scanning a breeze
- Brightness and contrast controls to customize color output for specific applications
- Professional bundled software includes Avision Button Manager V2, Avision AvScan X, and Nuance PaperPort SE 14
- Hi-speed USB 2.0 interface
- Includes TWAIN and ISIS Driver
- One button functionality allows you to assign up to nine scanning applications and perform at the touch of a button

Avision's book edge scanners feature a unique, innovative flatbed platform, with a slanted front edge engineered to accommodate books in a way that prevents the dark, shadowy area near the spine from appearing. Curved text often seen near the center is also eliminated, since this special design allows pages to spread flat on the scanner. Never again would you need to press the book against the scanner, which distorts the scanned image and potentially damages the book.

The Avision FB2280E is designed from the ground up to excel at scanning books. Packed with CCD sensors and a 600 dpi optical resolution, it can produce high quality A4 scans in 5.5 seconds at 200 dpi in black and white.

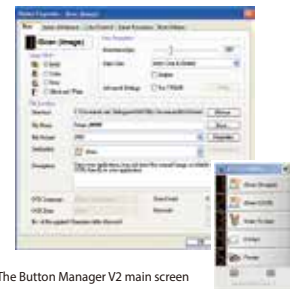
Another unique feature of the FB2280E is the document cover. With this cover, you can temporarily place your documents safely on the scanner, reducing the risk of misplacing them during scanning.

What we have bundled

The Avision FB2280E scanner comes with TWAIN and ISIS drivers, and is bundled with Avision Button Manager V2, AVScan X, and Nuance PaperPort SE 14.

Avision's Button Manager V2

-Completes your scan with a single step



The Button Manager V2 main screen

Button Manager V2 makes it easy for you to scan and send your image to your favorite destinations with a press one button. Now the new version comes with an innovative feature to let you scan and automatically upload the scanned document to popular cloud repositories such as Google Docs, Microsoft SharePoint, or FTP. In addition, the iScan feature allows you to insert the scanned image or recognized text after optional OCR (Optical Character Recognition) process to your text editor such as Microsoft Word to get your job done easily and quickly.

Avision FB2280E A4 Bookedge Scanner

AvScan X

-The Intelligent Document Management Tool

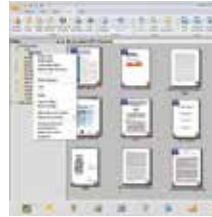


The AvScan X main screen

Document Imaging is the very first step of Document Management. However, poor quality images can cause serious problems to later indexing or storing processes. It may increase scanning labour costs and lowers the OCR accuracy. AvScan X ensures all documents are checked and polished at the time they are scanned such that the image quality is guaranteed before they are ready to use for other purposes. AvScan X is an intelligent scanning and electronic filing solution. AvScan X possesses distinct features that convert and index scanned information into electronic documents for easy storage and fast retrieval.

PaperPort SE14

- The Professional Choice to Organize and Share Your Documents



The PaperPort SE14 main screen

PaperPort SE 14 is Nuance's most popular scanning and document management solution, carefully designed specifically for home office use. Part traditional file cabinet, part digital-document desktop, PaperPort SE 14 is the fastest and easiest way to scan, share, search, and organize your documents. Additionally, PaperPort SE 14 now delivers anytime-anywhere access to your most important files however it's convenient for you – using a PC, Mac, iPhone, iPad, or

Avision TWAIN Driver



Avision's easy-to-use TWAIN driver provides various useful features such as auto color detection, color matching, multi-feed detection, and blank page removal to enhance your image quality and improve your productivity.

Avision FB2280E Product Specifications

Paper Feeding:	Flatbed
Scanning Technology:	Color Charged-Coupled Device (CCD)
Document Size (Flatbed):	Max. 297 mm x 216 mm (11.7 in x 8.5 in)
Scanning Speed: (Color@300dpi, A4)	5.5 sec.
Optical Resolution:	600 dpi
Output Resolution:	75, 100, 150, 200, 300, 400, 600 and 1200 dpi
Output Formats:	B/W, greyscale, 24-bit, color
Bundled Software:	Avision ButtonManager Avision AvScan X PaperPort SE 14
Interface/Drivers:	USB 2.0 / TWAIN,ISIS
Power Supply:	Input: 100~240 VAC, 50/60 Hz Output: 24V, 2A
Power Consumption:	<30 W
Environmental Factors:	Operating temperature: 10°C to 35°C (50°F to 95°F) Operating humidity: 10% to 85%
Acoustical Noise:	Standby: <45 dB Operating: <56 dB
Dimensions (W x D x H):	480 x 288 x 115 mm (18.9 x 11.3 x 4.5 in)
Weight:	6.5 kg (14.3 lbs)
Recommended Daily Scanning Volume:	Up to 2,500 pages

(ppm = pages per minute, ipm=images per minute, dpi=dots per inch)

We have endeavored to ensure that the information in this manual is accurate and that Avision is not responsible for printing or typographical errors. The above configuration is for reference only. The actual configuration (software, hardware) should be complied with the specification described in the purchase agreement.

Avision Inc. owns the intellectual property rights of the product outlook and design and the product outlook and design are subject to change. Avision reserves the right to the interpretation of the product description. Avision, Inc. All rights reserved. Other company and product names mentioned in this document are trademarks of their respective companies. Wherein the third party product is for reference only and Avision does not warrant these products nor is responsible for the efficiency or use of these products.

System Requirements

- CPU: Intel® Core 2 Duo or higher
- Memory: 1GB (32bit Windows)
2GB (64bit Windows)
- DVD-ROM: DVD ROM Drive
- USB: USB2.0 Port (USB 1.1 supported)
- Windows' Operating System:
Windows XP SP3, Vista, 7, 8.x (32 & 64 bit)

Contents

- FB2280E scanner
- Power Supply
- USB 2.0 Cable
- CD-ROM including:
 - Scanner Driver (TWAIN/ISIS Driver)
 - Avision Button Manager V2
 - Avision AVScan X
 - Nuance PaperPort SE 14

Avision

www.avision.com

No. 20, Creation Rd. I
Hsinchu Science Park 30077, Hsinchu,
Taiwan, R.O.C
Tel: 886-3-5782388 Fax: 886-3-5777017

Avision Europe GmbH

Siemensring 91
47877 Willich
Germany
Tel: +49-2154-88850-0
Fax: +49-2154-88850-29
E-mail:w.kuo@avision-europe.com

